

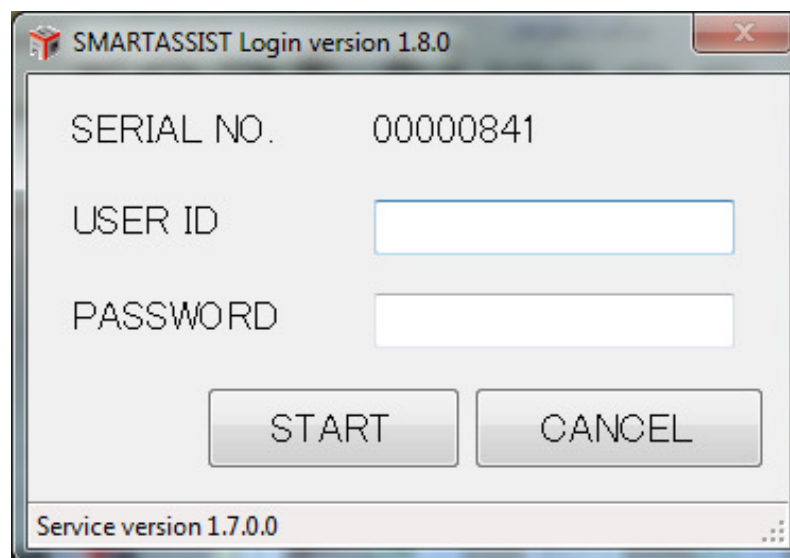
SmartAssist-Direct

Date 2 April

Vico de Bres
Customer Service Department
Yanmar Europe B.V.

YANMAR

Login screen

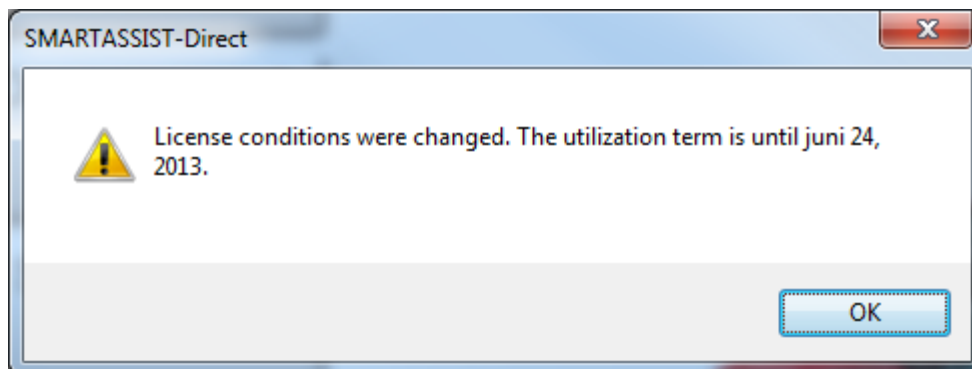


A screenshot of a Windows-style dialog box titled "SMARTASSIST Login version 1.8.0". The dialog box has a standard title bar with a close button (X) in the top right corner. The main content area contains the following fields and buttons:

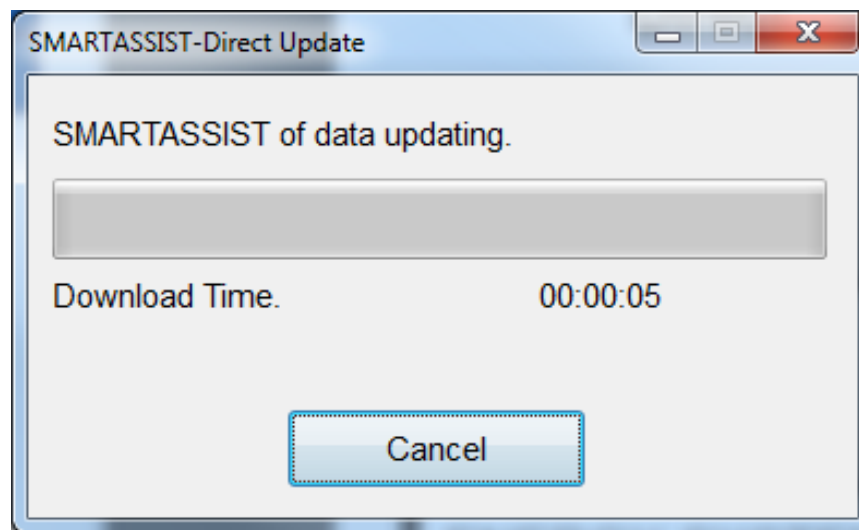
- SERIAL NO.:** 00000841
- USER ID:** An empty text input field.
- PASSWORD:** An empty password input field.
- START:** A button to initiate the login process.
- CANCEL:** A button to cancel the login process.

At the bottom of the dialog box, there is a status bar that reads "Service version 1.7.0.0" followed by a small icon of three dots.

License update information



Auto software update



Main menu

SMARTASSIST

Direct



Terminal Information / Job Edit

Language: English

AGRICULTURE ▶

MARINE/Ocean ▶

ENERGY SYSTEM ▶

CONSTRUCTION ▶

INDUSTRIAL ENGINE ▶



Exit

YANMAR DIAGNOSTIC TOOL

ECU Access

MainMenu

ECU Access | Data Management | Database Access | Advanced Settings/Additional Settings | Job Assistant

Diagnostics (Execution)	<Work that is done with communicating with the ECU (controller)>
Product Operation Data (Acquisition)	The communication connection to the center is included and a necessary function is not included.
ECU Reprogramming (Flash)	
Set Value Copy	<<Operation, adjustment and repair of failure diagnosis>>
FIE Replacement (Execution)	
Customization (Execution)	The measurement and the preservation data that ECU maintains are displayed

StartMenu

INDUSTRIAL ENGINE / Engine / Expert

ONLINE

ECU Access screen

SMARTASSIST-Direct

File(F) View(V) Operation(O) Tool(T) Help(H)

Training

TRAINING Active Code

MenuToolBar

- ▶ ECU Information
- ▶ Diagnostic Codes
- ▶ Freeze Frame Data
- ▶ Diagnostic Tests
- ▶ Data Logging
- ▶ Historical Data
- ▶ ECU Structures
- ▶ System Settings

Comment

Baudrate : 500k Engine Type(Vehicle Manufacture):4TNV88C-K / Engine S/N:12345

Data management

MainMenu

ECU Access | **Data Management** | Database Access | Advanced Settings/Additional Settings | Job Assistant

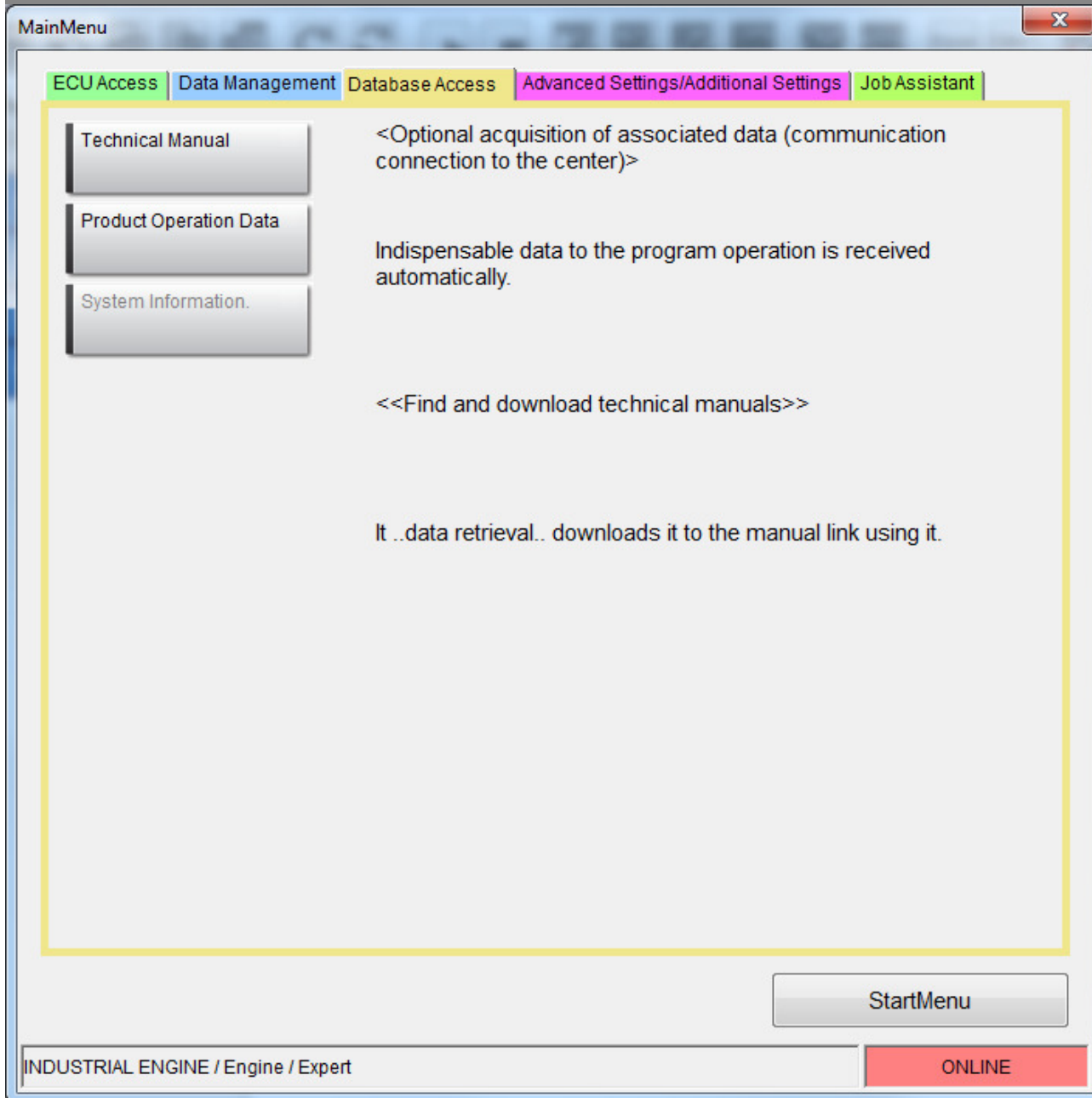
Diagnostic Data (Display)	<Work that can be done without communicating with the ECU (controller)>
Product Operation Data (Display)	The communication connection to the center is included and a necessary function is included.
ECU Soft Download	
Trim Data Download	<<Display of operation machine information saved data>>
Customization	
Manual Search	Display and comparison of data that does acquisition preservation from ECU on operation machine information screen.
Saved Data	
Exchange Information Management	

StartMenu

INDUSTRIAL ENGINE / Engine / Expert

ONLINE

Database access



Download failure diagnosis manuals

Manual Download X

Lisence
Marine
Industrial Engine

Language Japanese English

Update 0 case Find result 0 case

Keyword

Sort key Sort order

No.	Manual name	Ver.	Date	State	Size

Advanced Settings/Additional Settings

MainMenu

ECU Access | Data Management | Database Access | **Advanced Settings/Additional Settings** | Job Assistant

Training <Settings and optional functions regarding system action>

Communication Settings In usual service

Terminal Information <<Operation training of failure diagnosis screen>>

Manual Deletion

The operation can be simulated without connecting each screen of the failure diagnosis with ECU.

StartMenu

INDUSTRIAL ENGINE / Engine / Expert

ONLINE

Training mode

The screenshot shows the SMARTASSIST-Direct software interface. At the top, a grey banner displays "Training mode". Below this is the application window title bar "SMARTASSIST-Direct" with standard window controls. A menu bar includes "File(F)", "View(V)", "Operation(O)", "Tool(T)", and "Help(H)". A toolbar contains various icons for file operations, navigation, and tool functions. Below the toolbar, a "Training" tab is active, featuring a yellow "TRAINING" button and a red "Active Code" button. On the left, a "MenuToolBar" lists several options: ECU Information, Diagnostic Codes, Freeze Frame Data, Diagnostic Tests, Data Logging, Historical Data, ECU Structures, and System Settings. The main workspace is a large grey area. At the bottom of the workspace is a "Comment" field. The status bar at the very bottom shows "Baudrate : 500k" and "Engine Type(Vehicle Manufacture):4TNV88C-K / Engine S/N:12345".

Baudrate : 500k Engine Type(Vehicle Manufacture):4TNV88C-K / Engine S/N:12345

Job Assistant

MainMenu

ECU Access | Data Management | Database Access | Advanced Settings/Additional Settings | Job Assistant

ECU Replacement

FIE Replacement

Service Campaign

Job List

<Operation guide for sequential operations>

Please select each tag menu when you do an individual operation.

<<Sequential operation for ECU exchange>>

It exchanges

StartMenu

INDUSTRIAL ENGINE / Engine / Expert

ONLINE

THANK YOU FOR YOUR ATTENTION.

YANMAR